

Alaska Department of Fish and Game

Habitat Section
Southeast Region



114-34-10100 Tributary 2

ADDITION

Water body name:

Survey date: 7/8/2022; 9/26/2023

Quad: Juneau A-5

Species & Lifestage:

Upper Reach Latitude: 58.097625 **Longitude:** -135.589705

Survey crew: FC, NJ, CD, RR

Lower Reach Latitude: 58.096242 **Longitude:** -135.585106

Findings: We surveyed this uncataloged stream using a backpack electrofisher, baited minnow traps, and GPS. We captured juvenile coho salmon and cutthroat trout. The tributary stream flows through a 1 ft wide culvert with a slight perch, and into a fairly undefined channel dominated by fine organic sediment (Table 1; Figures 1–3).

Recommendations: Add this uncataloged stream to the anadromous waters catalog for rearing coho salmon (Figure 4).

Nomination: Pending

Table 1.—114-34-10100 tributary 2 survey data.

Waypoint	Latitude	Longitude	Notes	Stream Width ft	Stream Substrate	Habitat Features	Gradient %	Sample Effort	Sample Results
913	58.097603	-135.589838		4-6	Fine Organic Small Gravel	SWD	1-2	EF	2 CO
941	58.098117	-135.591338	Just below culvert, trapping effort in adjacent waypoint.	2-4	Small Gravel		2-4		
957	58.098057	-135.591232	12" CMP perched ~3", very rusty.	4-6	Fine Organic		2-4	MT	3 CT



Figure 1.—Juvenile coho salmon captured at waypoint 913.



Figure 2.—Channel at waypoint 913.



Figure 3.—Culvert outlet at waypoint 913.

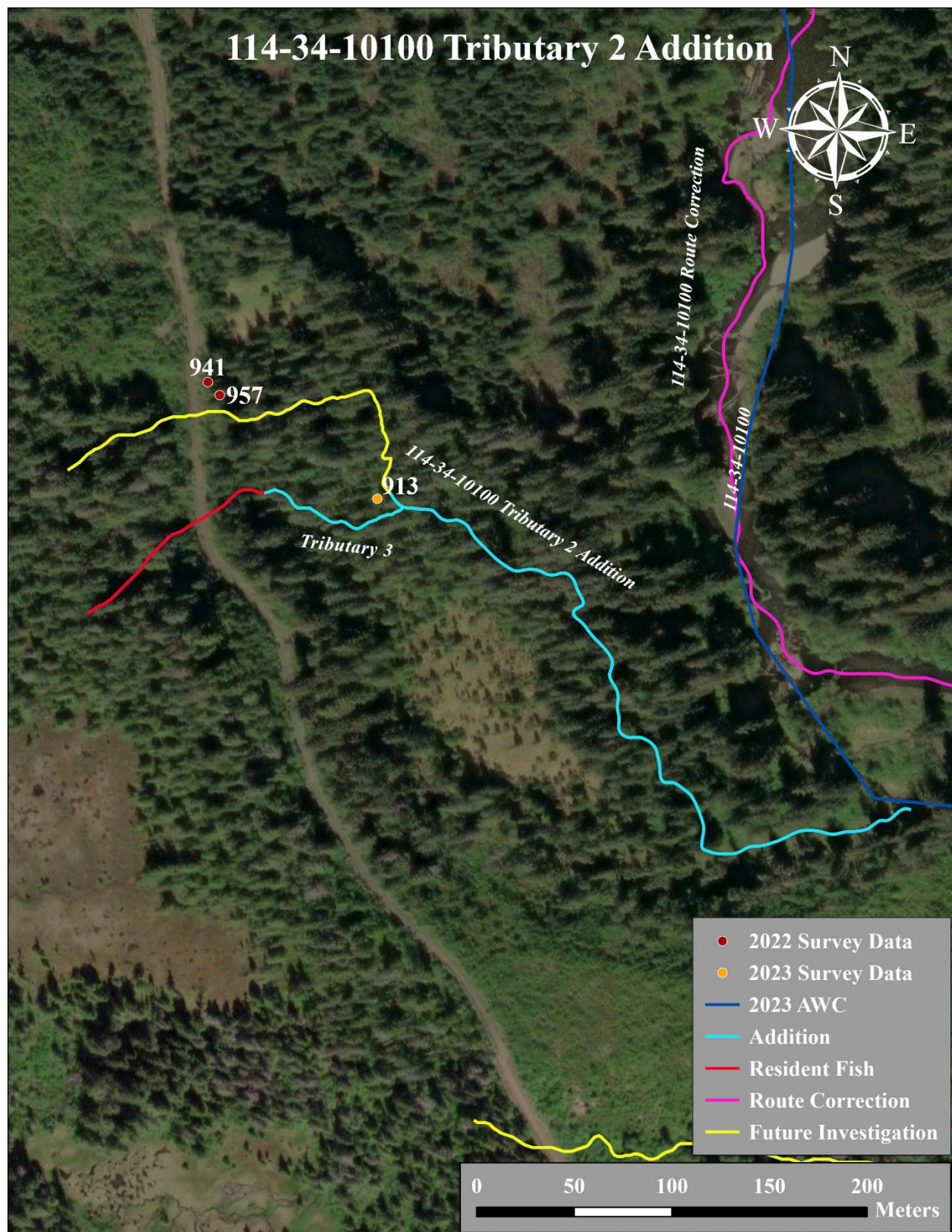


Figure 4.—114-34-10100 tributary 2 addition map.